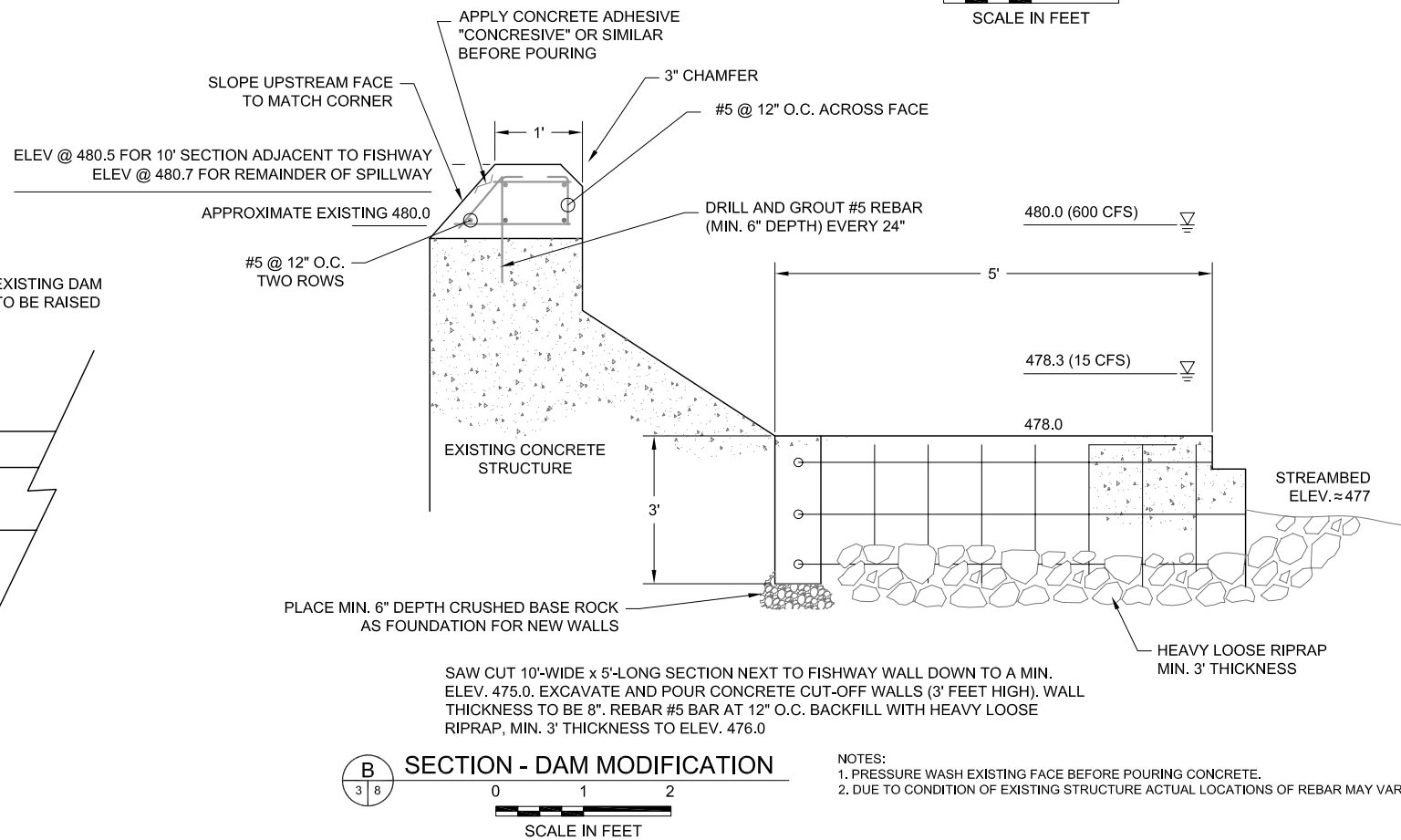
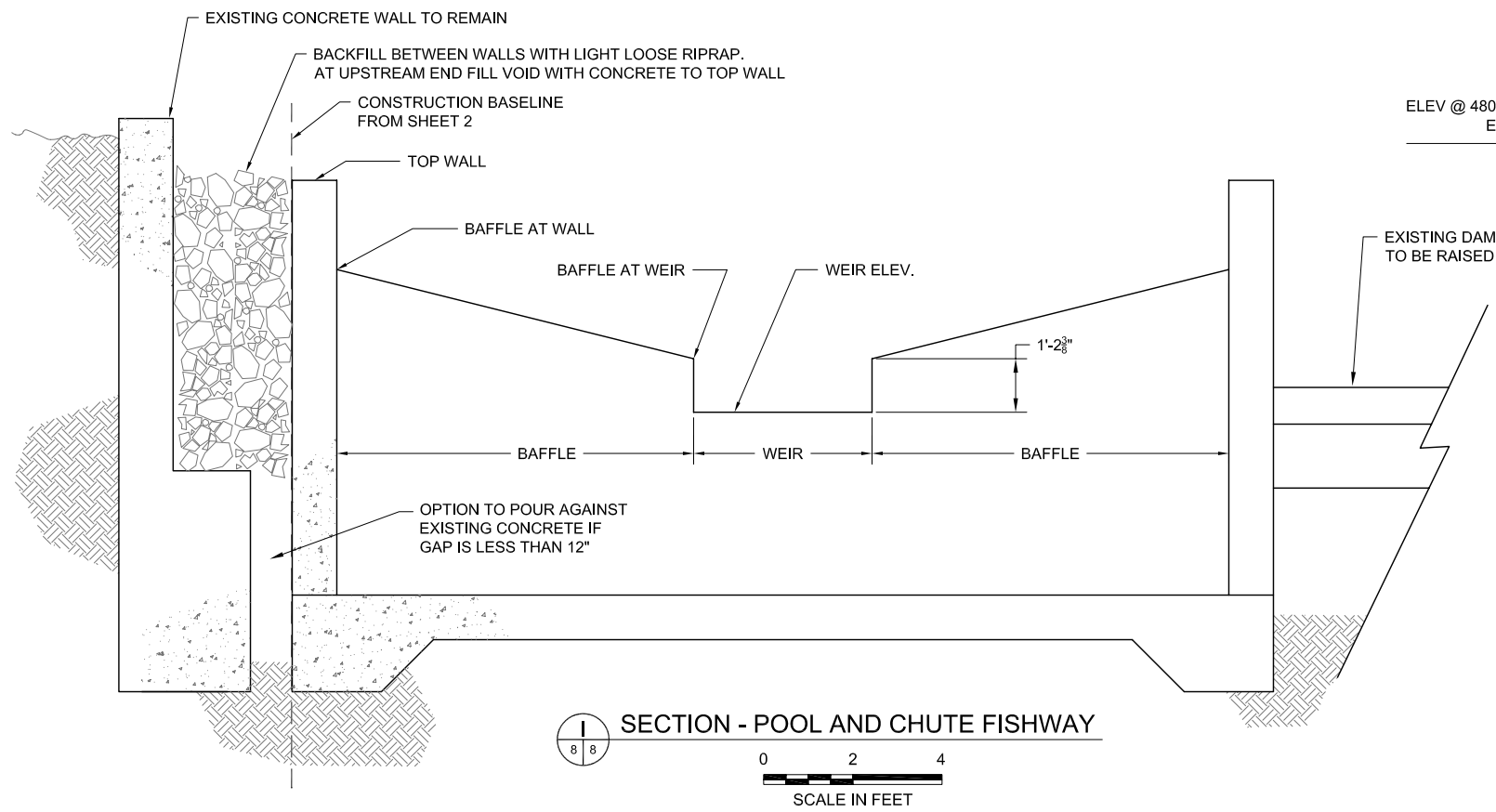
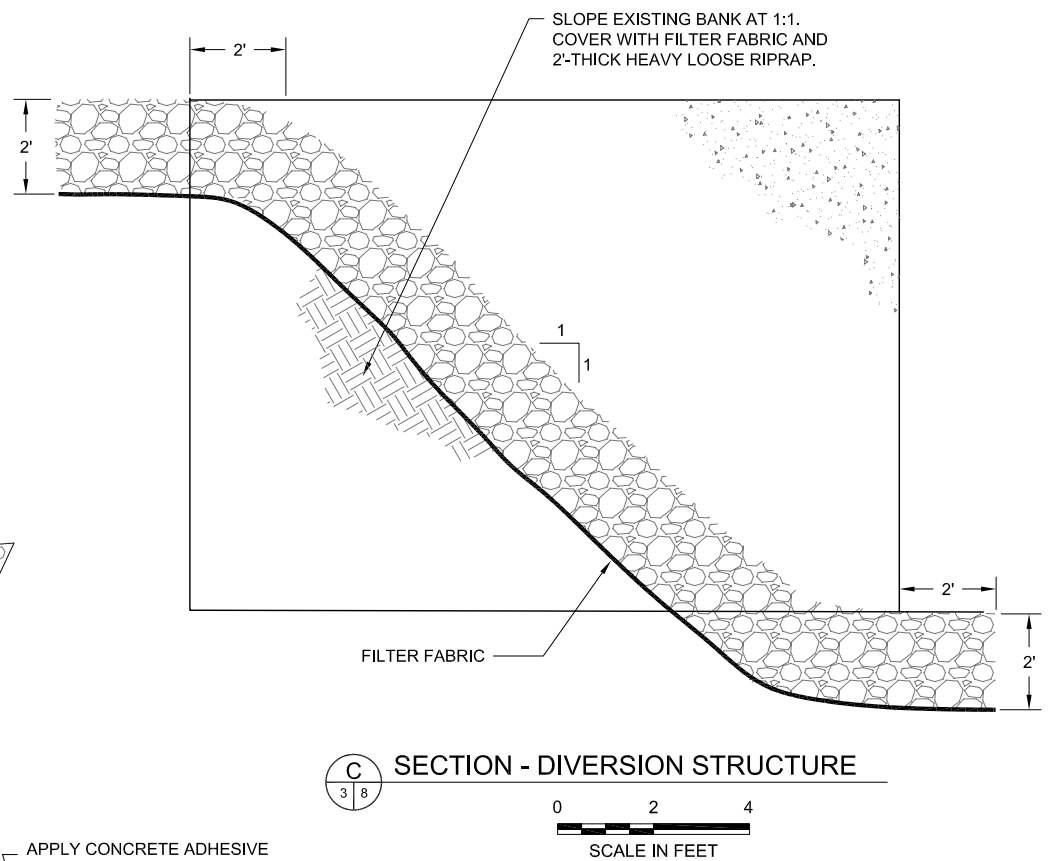
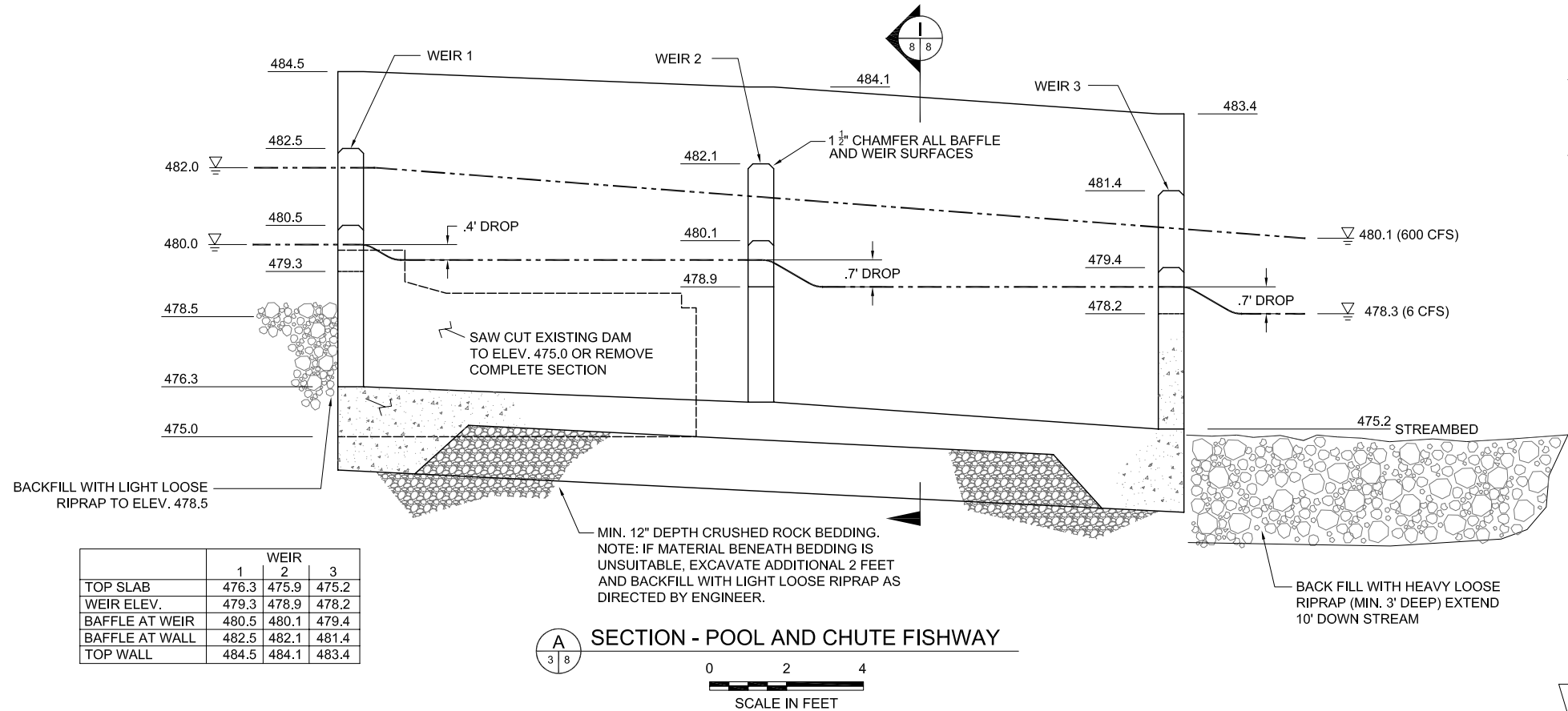




Jun 14, 2008 3:45pm 11/14/2007 K:\Jobs\050315-HOFER DAM\050315-HOFER DAM\050315-001.dwg 8 FISHWAY STRUCTURE



REVISIONS				
REV	DATE	BY	APP'D	DESCRIPTION

DESIGNED BY: P. POWERS
DRAWN BY: LEVASSEUR
CHECKED BY:
APPROVED BY:
SCALE: AS NOTED
DATE: 06/14/06

FINAL DESIGN
HOFER DAM FISH PASSAGE PROJECT

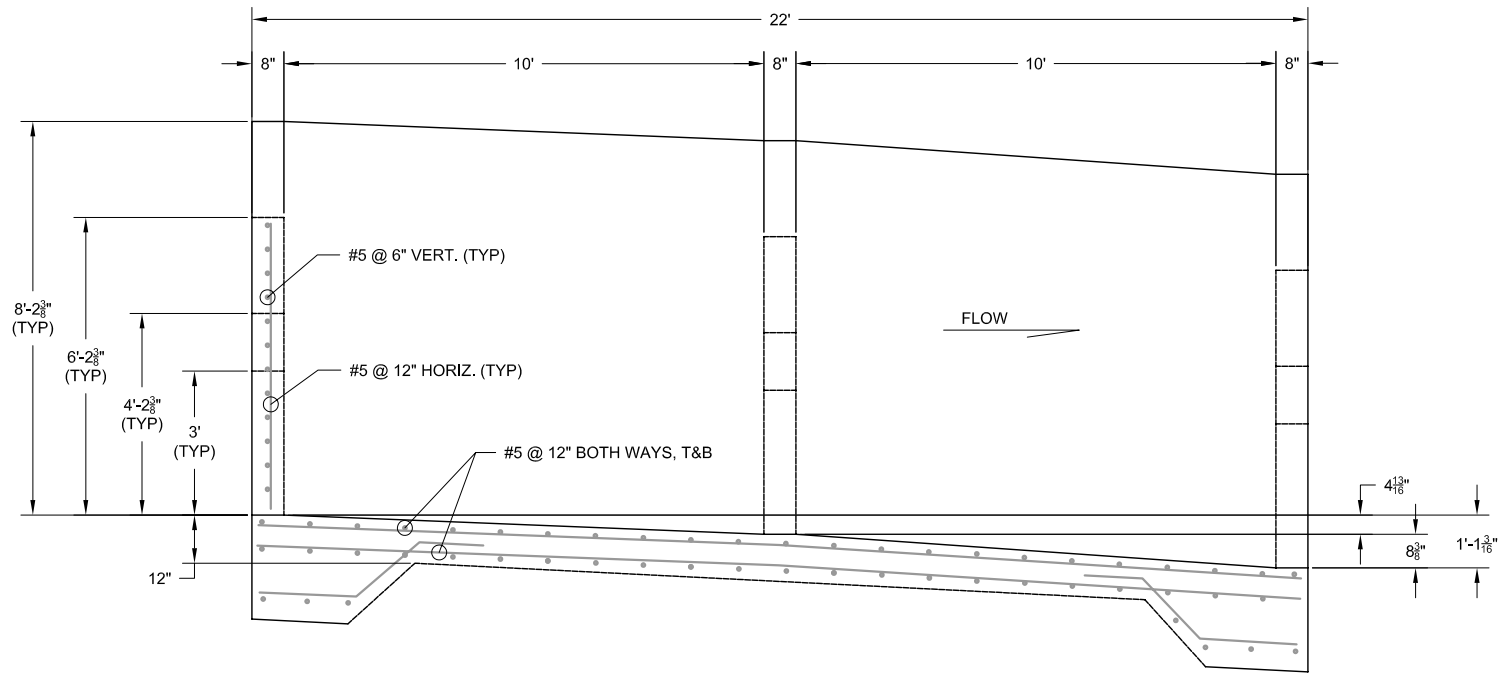
FISHWAY STRUCTURE
AND DAM MODIFICATIONS

SHEET:

8

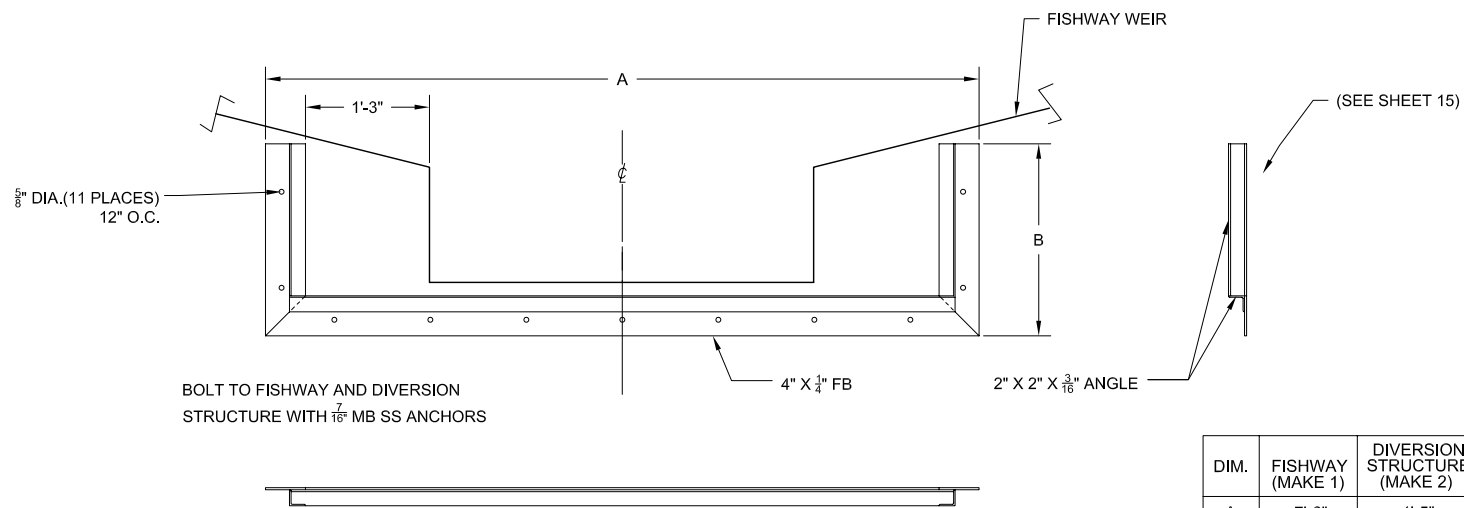
SHEET NO. 8 OF 15

Jun 14, 2006 3:12pm levasseur K:\job\050314\HOFER_DAM\05031401.dwg 9 FISHWAY STRUCTURE



SECTION - POOL AND CHUTE FISHWAY

0 1 2
SCALE IN FEET

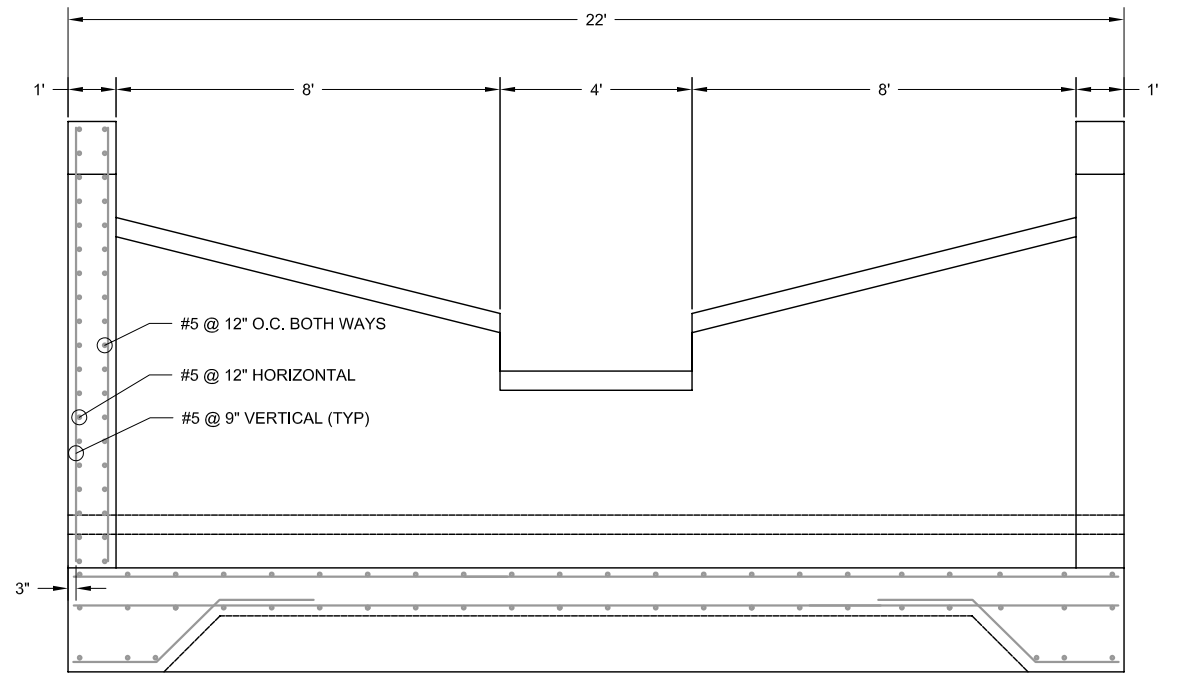


FISHWAY AND DIVERSION STRUCTURE STOP LOG GUIDE (SEE SHEET 15)

0 1 2
SCALE IN FEET

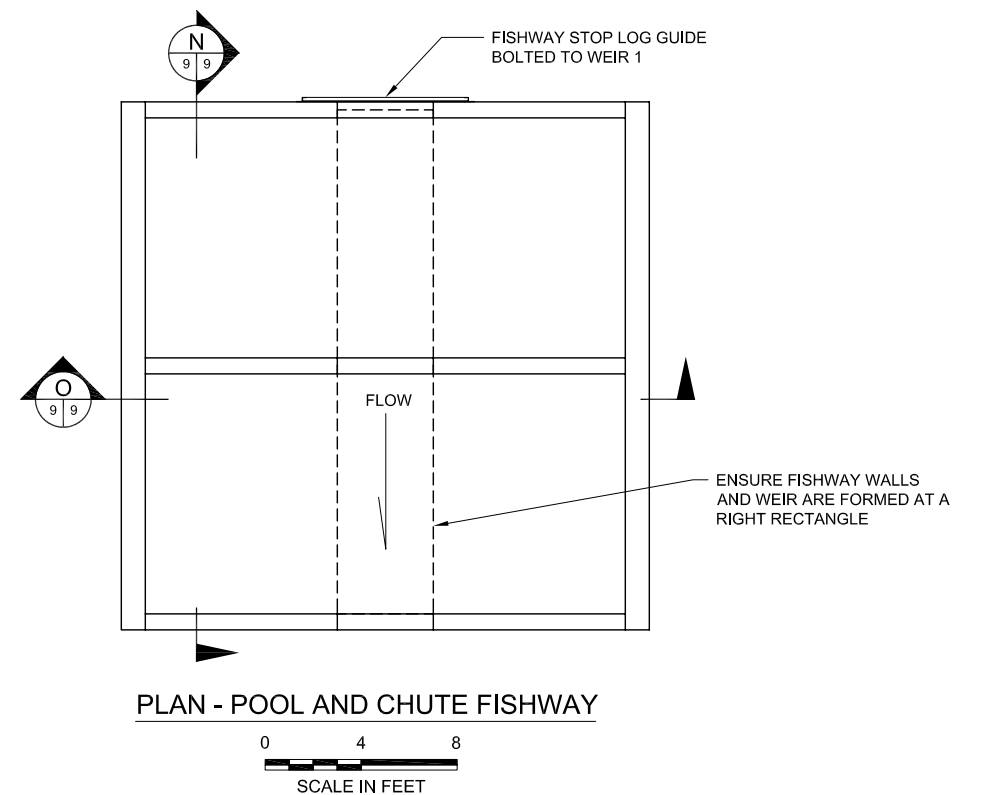
DIM.	FISHWAY (MAKE 1)	DIVERSION STRUCTURE (MAKE 2)
A	7'-6"	4'-5"
B	2'-0"	5'-0"

PROVIDE TREATED 2 x 12" FOR STOPLOGS.
TWO FOR FISHWAY, TWO FOR DIVERSION
STRUCTURE.



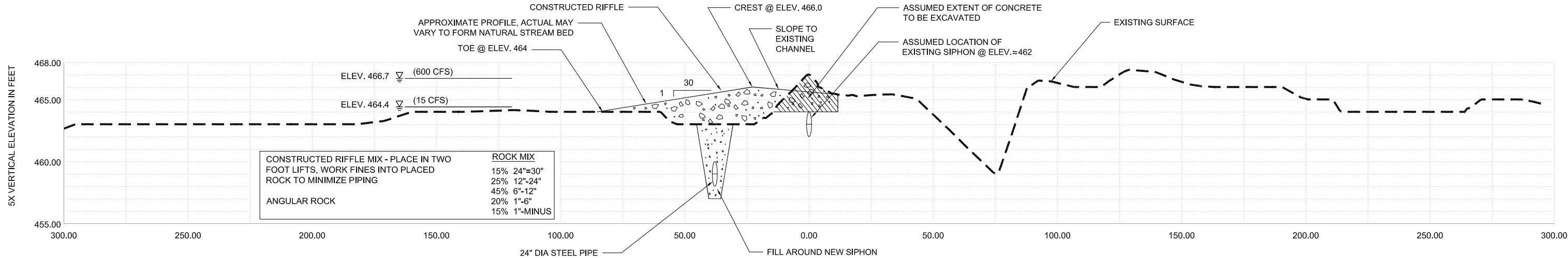
SECTION - POOL AND CHUTE FISHWAY

0 2 4
SCALE IN FEET



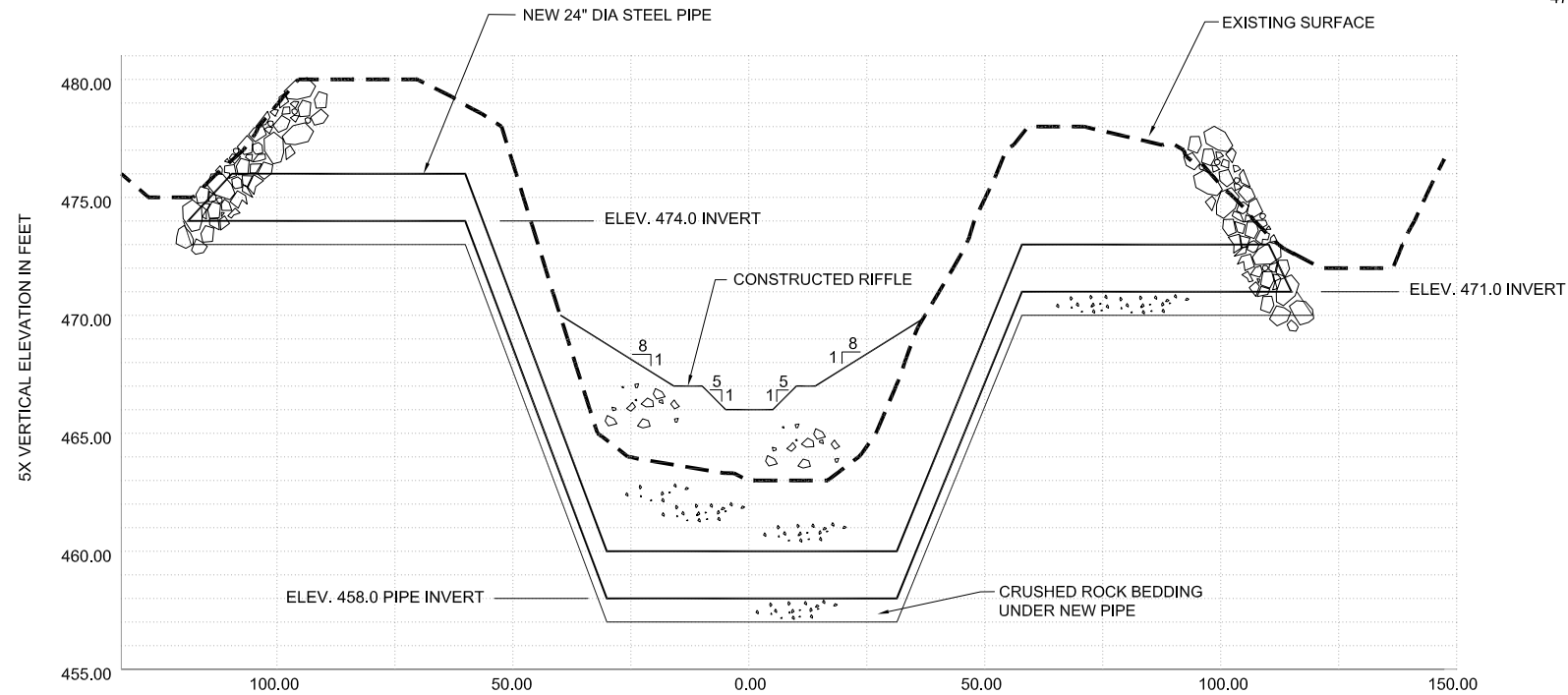
PLAN - POOL AND CHUTE FISHWAY

Jun 14, 2006 3:08pm Hvasseur K:\Users\60319-HCEER-DAM\02031901100% Design\02031901-00d Sheet 10.dwg 10 SECTIONS & PROFILES

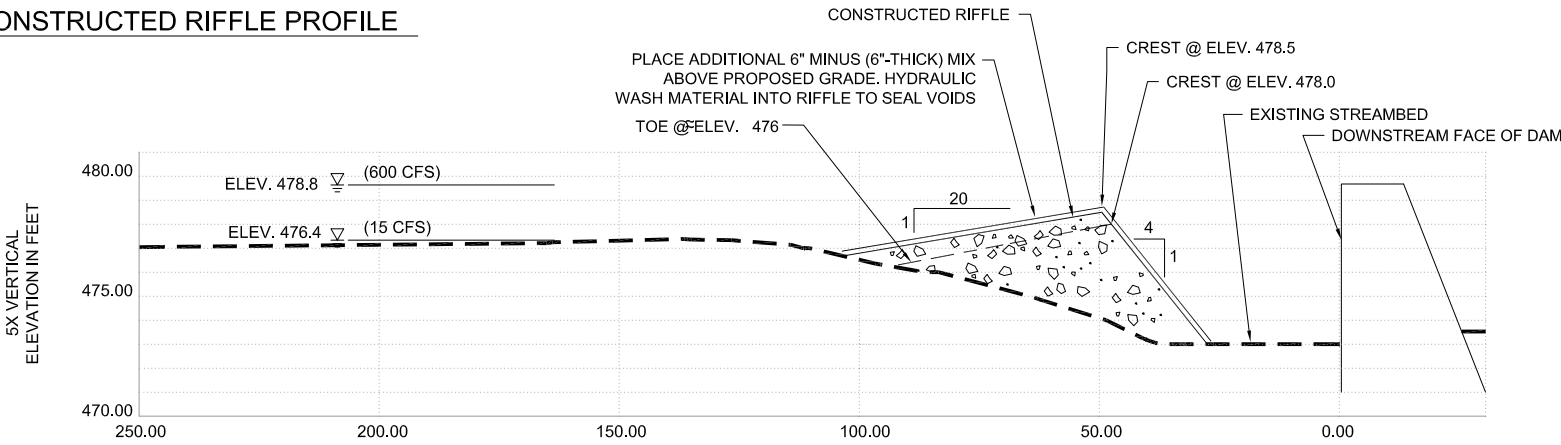


J
4 10
INVERTED SIPHON RE-LOCATION AND CONSTRUCTED RIFFLE PROFILE

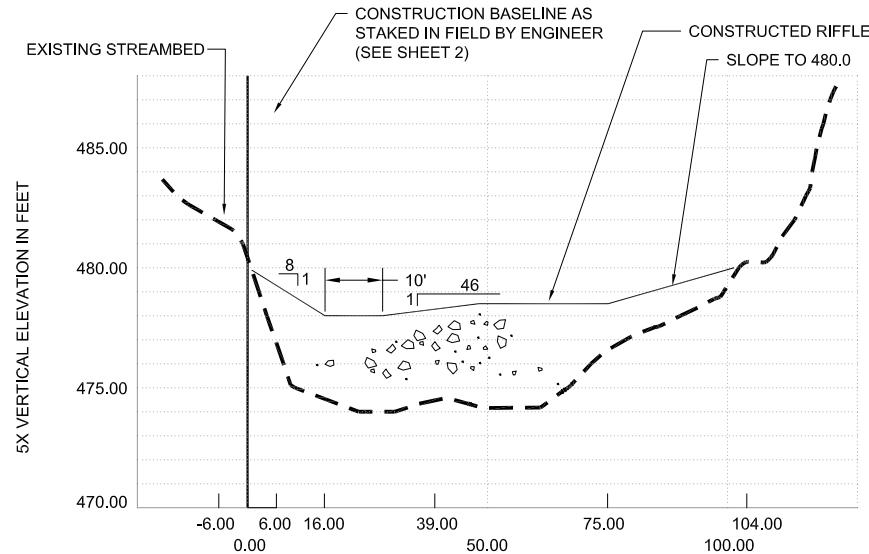
NOTE:
WHERE BANKS ARE DISTURBED FROM INSTALLATION
OF STEEL PIPE, BACKFILL WITH EXISTING MATERIAL.



K
4 10
INVERTED SIPHON RE-LOCATION AND CONSTRUCTED RIFFLE SECTION



D
3 10
CONSTRUCTED RIFFLE PROFILE AT DAM



E
3 10
CONSTRUCTED RIFFLE SECTION AT DAM

CONSTRUCTED RIFFLE STA. & ELEV.		
DISTANCE FROM BASELINE	ELEVATION	NOTE
-6'	480.0	MATCH EXISTING BANK
6'	478.0	CREST (LOW FLOW)
16	478.0	CREST
39	478.5	BENCH
75	478.5	TOE
104	480.0	MATCH EXISTING BANK

REVISIONS				
REV	DATE	BY	APP'D	DESCRIPTION

DESIGNED BY: P. POWERS
DRAWN BY: LEVASSEUR
CHECKED BY:
APPROVED BY:
SCALE: AS NOTED
DATE: 06/14/06

FINAL DESIGN
HOFER DAM FISH PASSAGE PROJECT

CONSTRUCTED RIFFLES
SECTIONS AND PROFILES

SHEET:

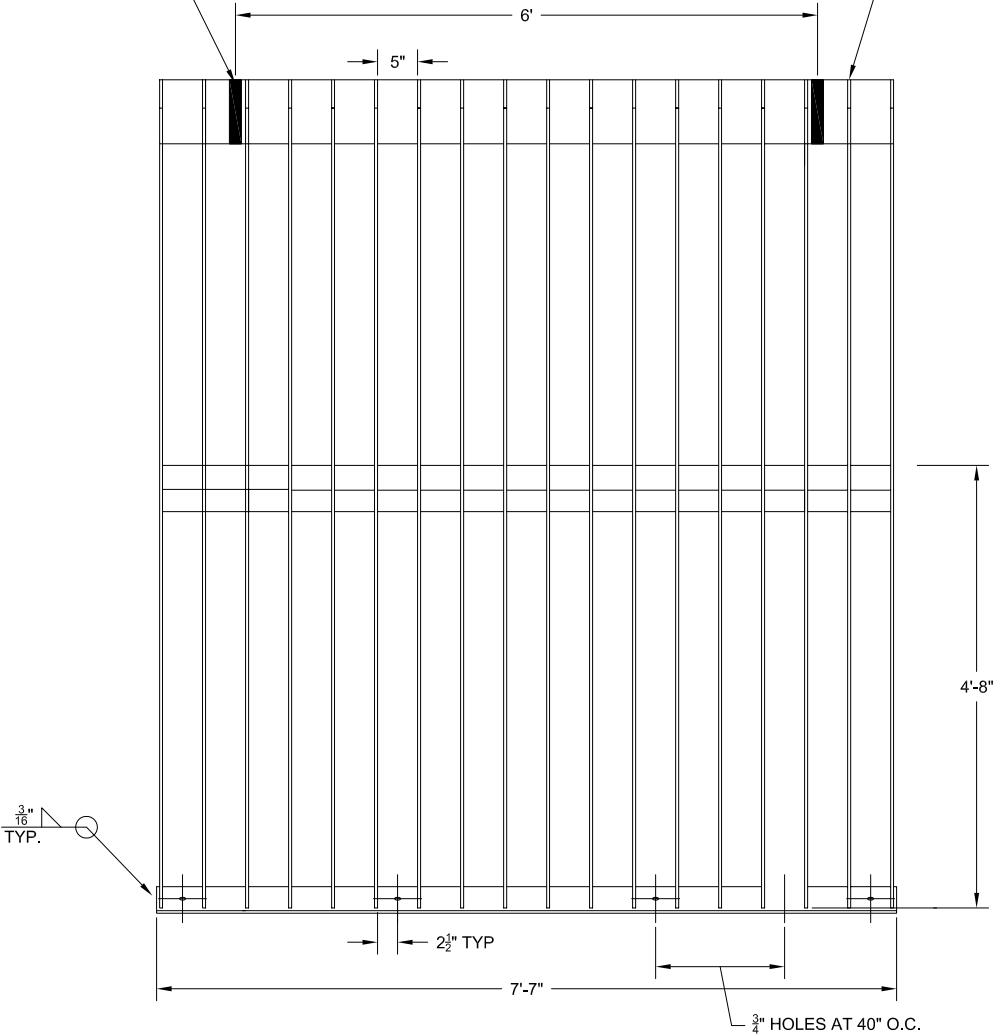
10

SHEET NO. 10 OF 15

Jun 14, 2006 3:11pm levasseur K:\Jobs\050319-ADFER DAM\05031901100% Design\05031901100% Design.dwg 11 TRASH RACK

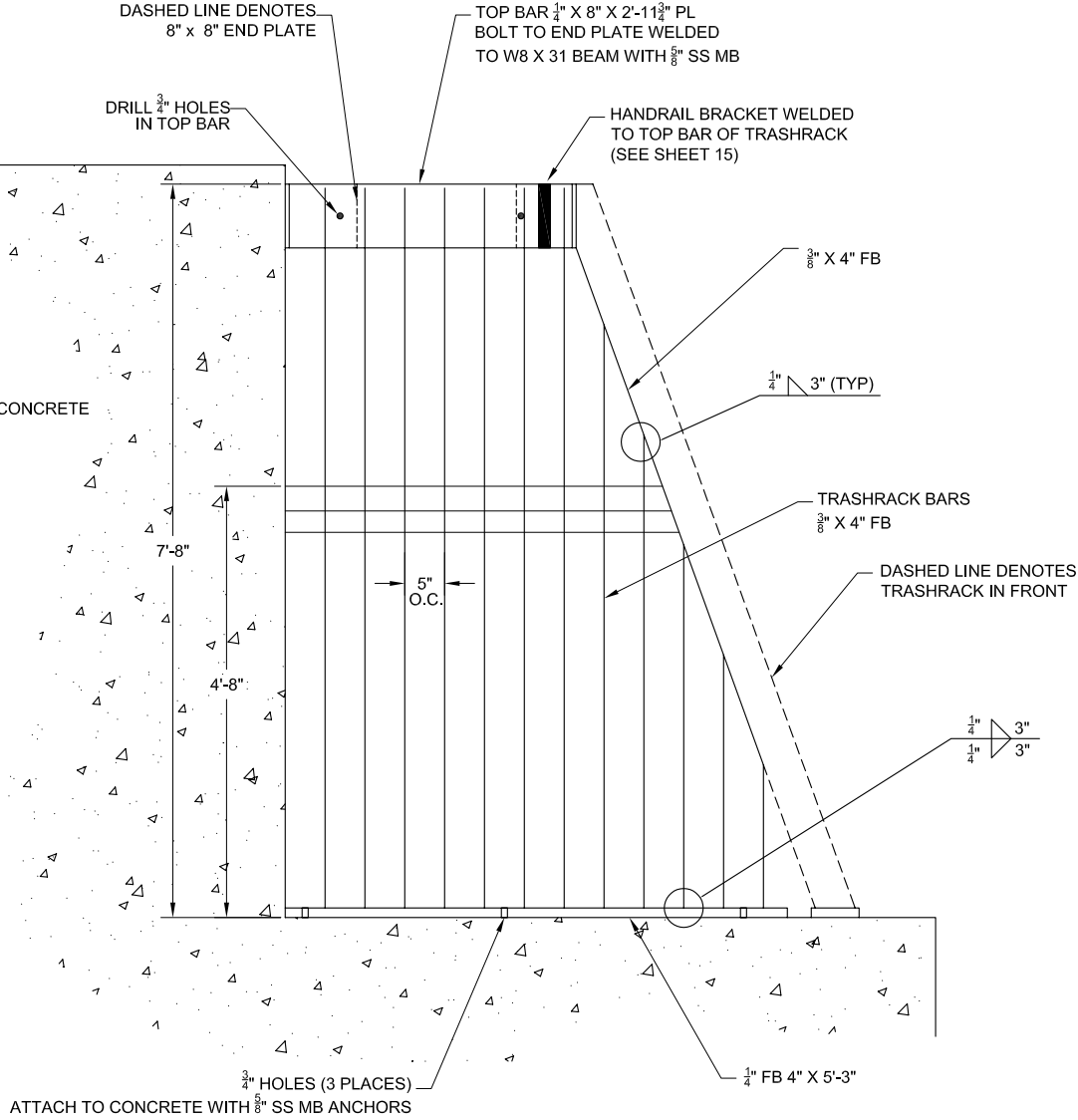
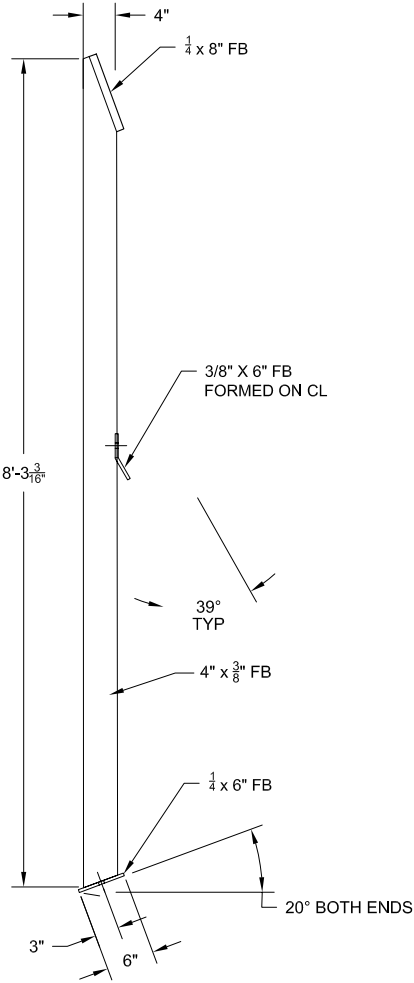
HANDRAIL BRACKET AT 6' ON CENTER. TWO PER PANEL. (SEE SHEET 15)

DRILL $\frac{3}{4}$ " HOLES IN TOP BAR FOR MONITORING



TRASHRACK FRONT PANEL

MAKE 4



TRASHRACK SIDE PANEL



- NOTES:
1. MAKE TWO TRASHRACKS (1 AS SHOWN, 1 OPPOSITE)
 2. END TRASHRACKS ARE VERTICAL, NOT 20° ANGLE.

REVISIONS					DESCRIPTION
REV	DATE	BY	APP'D		

DESIGNED BY: P. POWERS
DRAWN BY: LEVASSEUR
CHECKED BY:
APPROVED BY:
SCALE: AS NOTED
DATE: 06/14/06

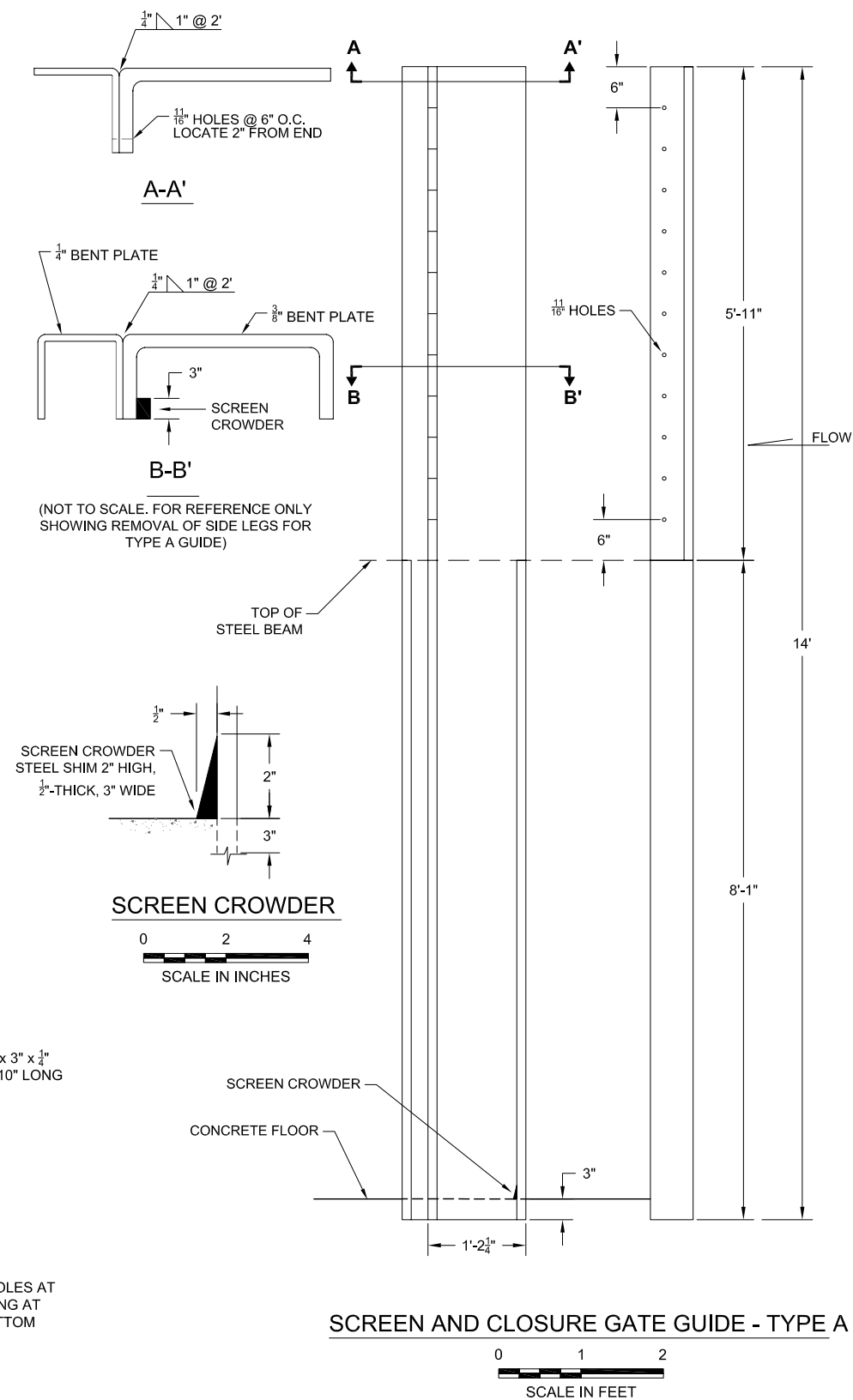
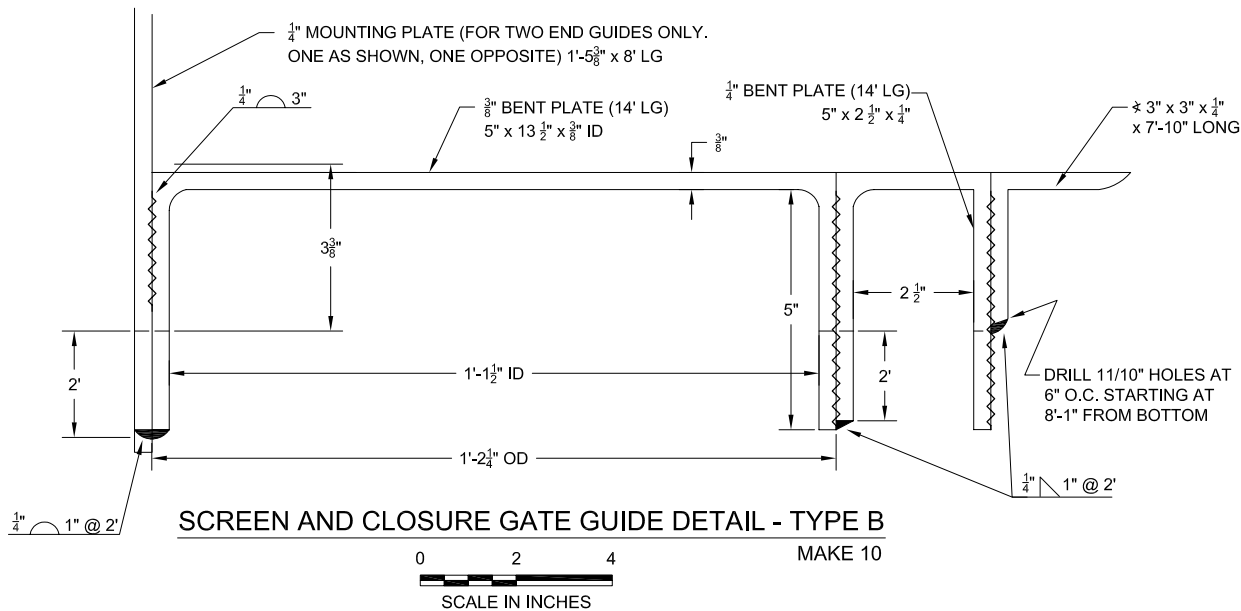
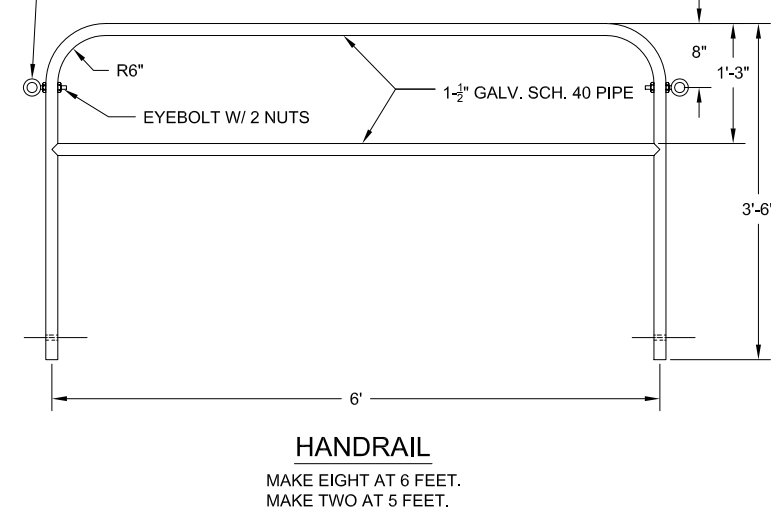
FINAL DESIGN
HOFER DAM FISH PASSAGE PROJECT

TRASH RACK, SCREEN GUIDE AND MISC.
STEEL FABRICATION DETAILS

SHEET:

11

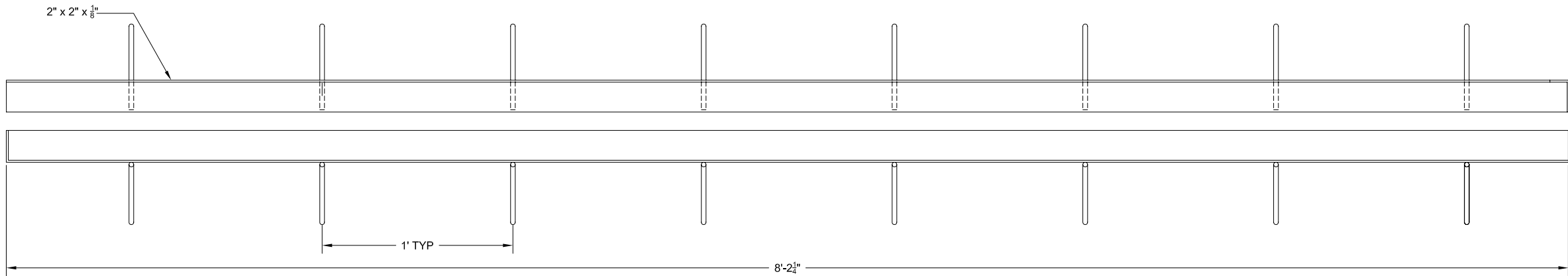
SHEET NO. 11 OF 15



NOTES:

1. DIMENSIONS SAME AS TYPE B EXCEPT FOR ANGLE AND PLATE.
2. MAKE SIX (THREE OPPOSITE, THREE AS SHOWN)

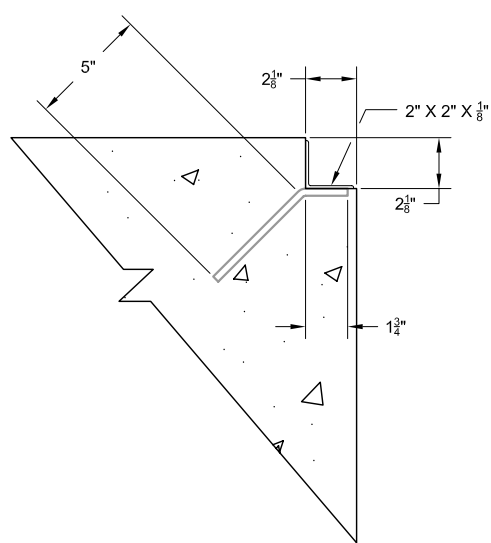
[illegible]



LEDGER

0 1/4 1/2

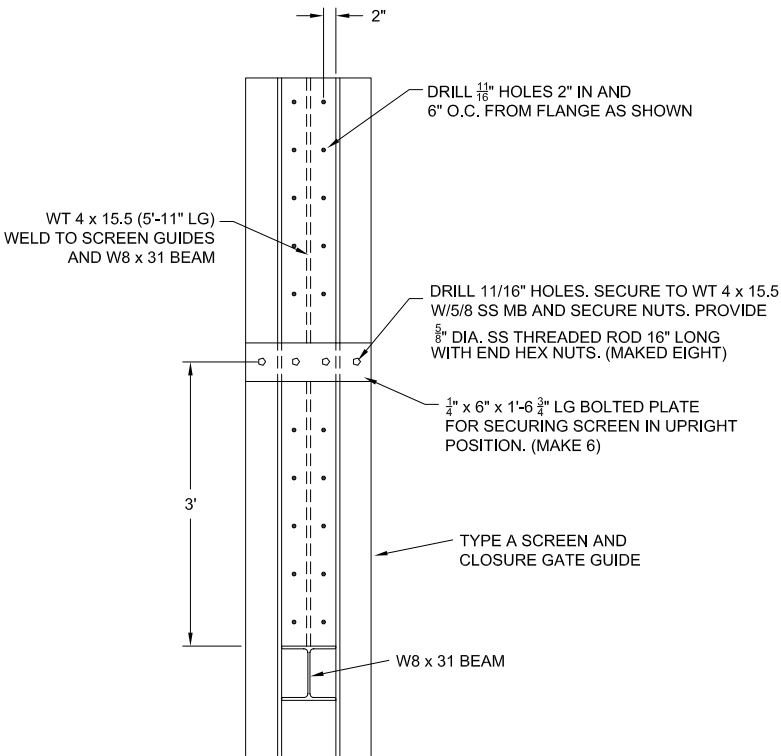
SCALE IN FEET



TYPICAL LEDGER INSTALLATION

0 1/4 1/2

SCALE IN FEET

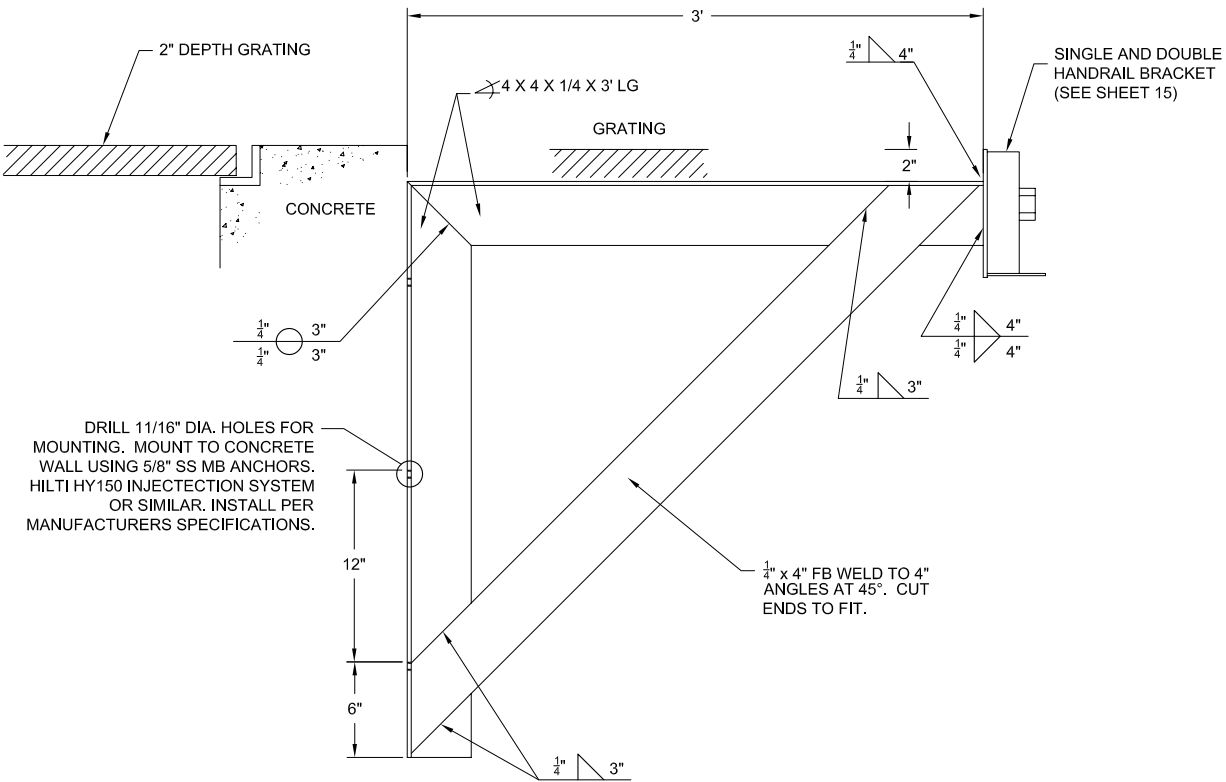


SCREEN SUPPORTS

THREE REQUIRED

0 1 2

SCALE IN FEET

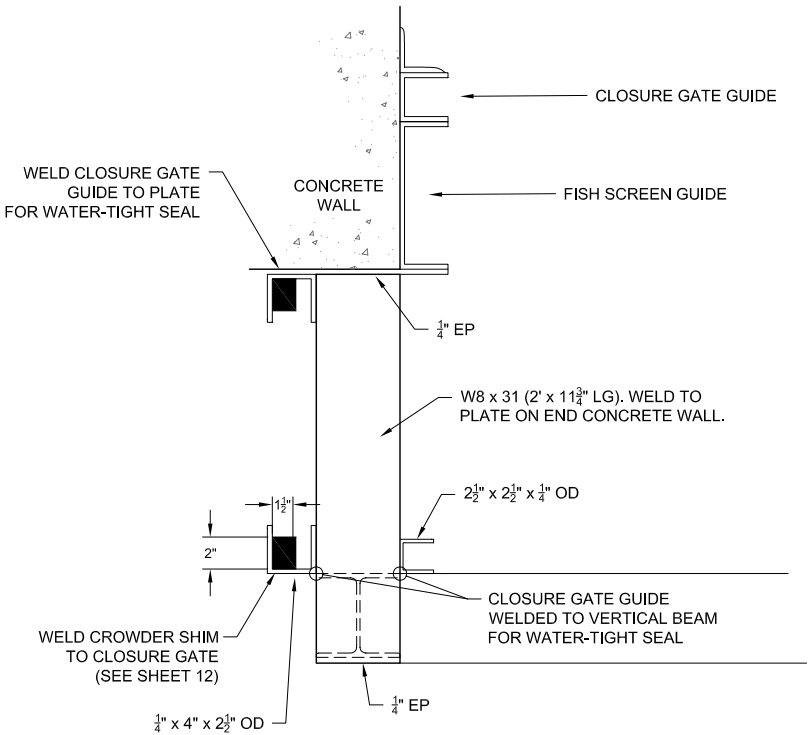


WALKWAY GRATING SUPPORTS WITH HANDRAIL BRACKETS

0 1/2 1

SCALE IN FEET

- NOTES:
1. WALKWAY GRATING SUPPORTS WITH HANDRAIL BRACKETS (6' O.C.)
 2. FOUR REQUIRED. TWO REQUIRED WITHOUT HOLES DRILLED FOR MOUNTING.
 3. END SUPPORTS (TOWARD RIVER) SHALL BE WELDED TO VERTICAL W8 X 31 STEEL BEAMS.



CORNER DETAIL

REVISIONS					
REV	DATE	BY	APP'D	DESCRIPTION	

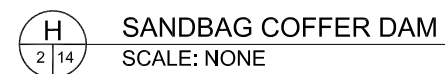
DESIGNED BY: P. POWERS
DRAWN BY: LEVASSEUR
CHECKED BY:
APPROVED BY:
SCALE: AS NOTED
DATE: 06/14/06

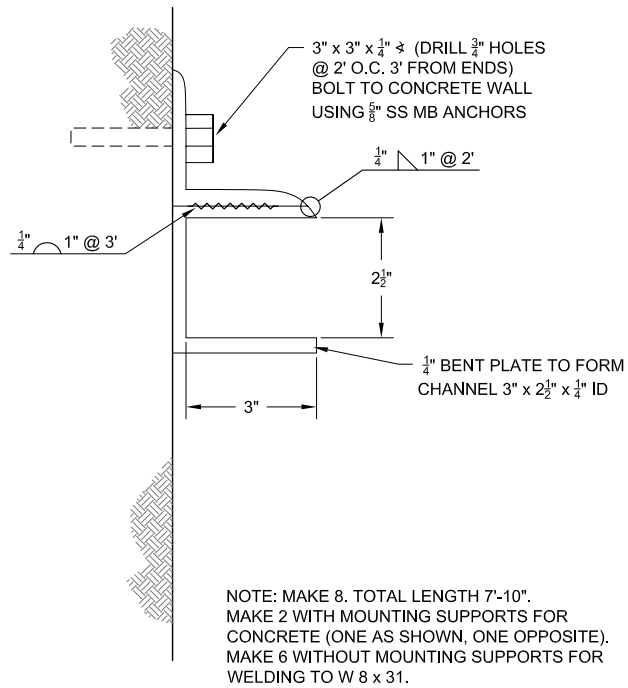
FINAL DESIGN
HOFER DAM FISH PASSAGE PROJECT

DETAILS

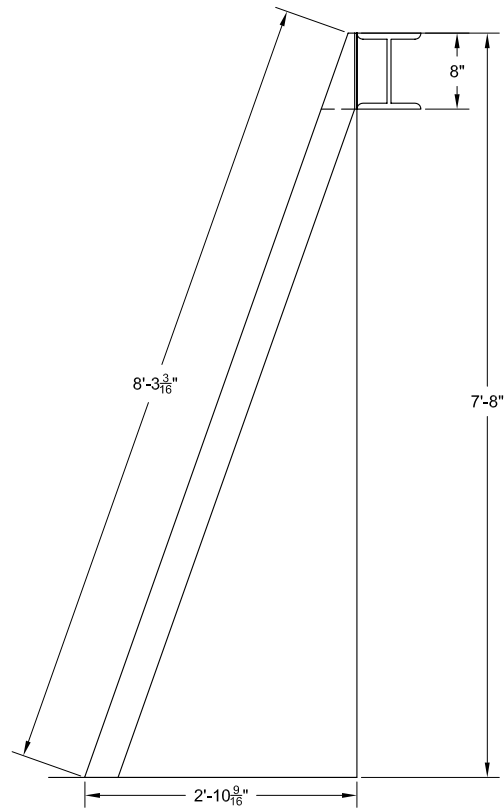


- NOTES:**
1. INSTALL ON SLOPE SO INCOMING WATER FLOWS DOWNHILL THROUGH BAG.
 2. STRAP NECK OF SILT FILTER BAG TIGHTLY TO DISCHARGE HOSE.
 3. SILT FILTER BAG IS FULL WHEN IT CAN NO LONGER EFFICIENTLY FILTER SEDIMENT OR PASS WATER AT A REASONABLE RATE. USED FILTER BAGS MAY BE CUT OPEN AND CONTENTS SPREAD, SEEDED, AND MULCHED AFTER REMOVAL OF FABRIC. FABRIC SHALL BE DISPOSED OF OFF SITE.

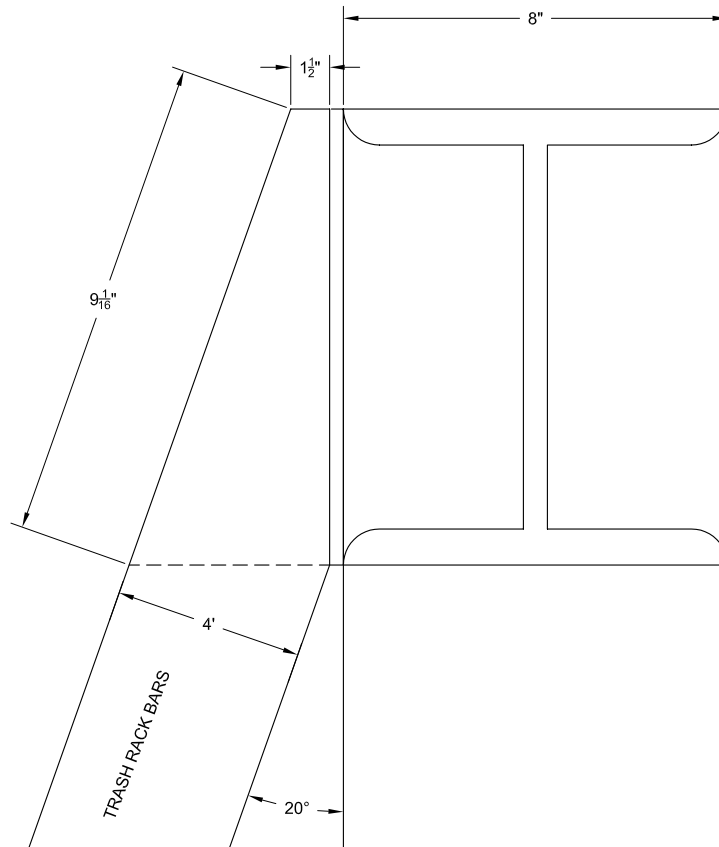




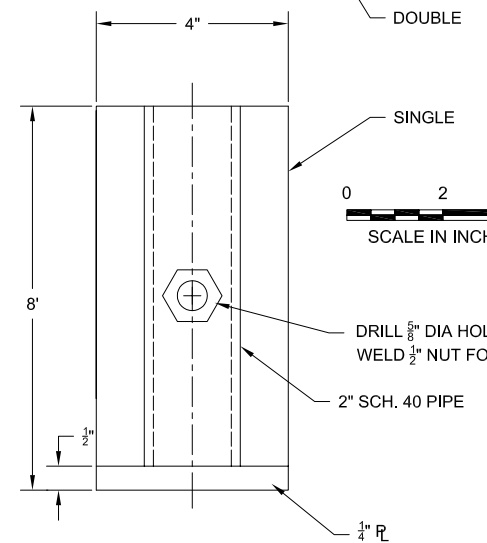
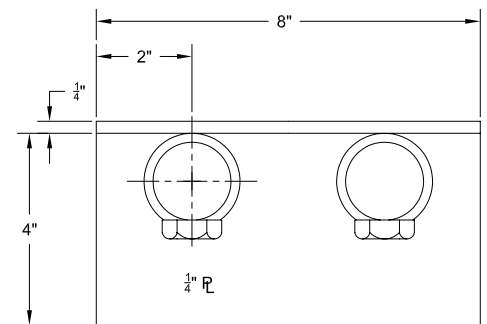
BAFFLE STOP LOG GUIDE



TRASH RACK DIMENSIONS

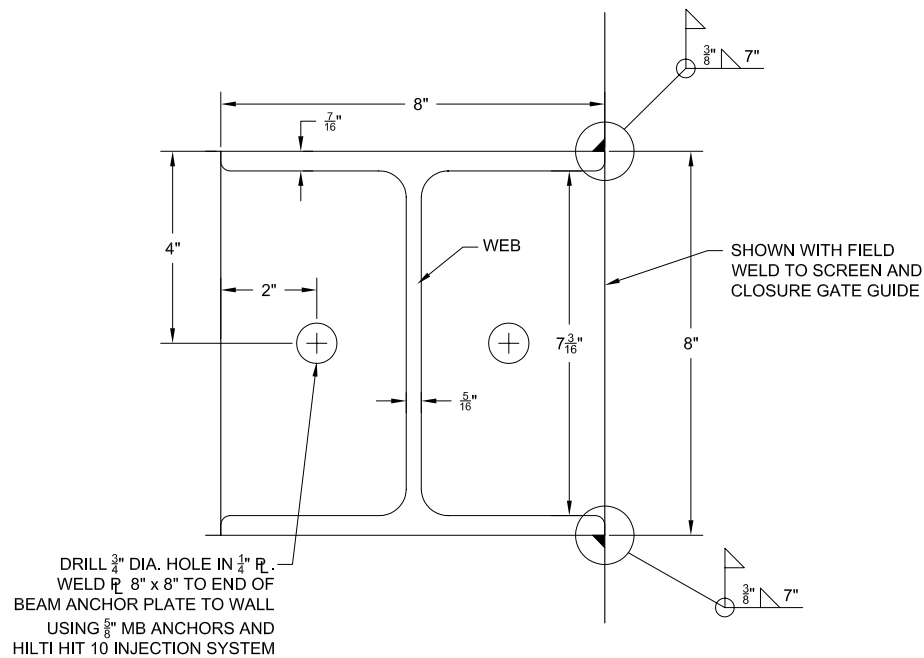


TOP OF TRASH RACK DETAIL

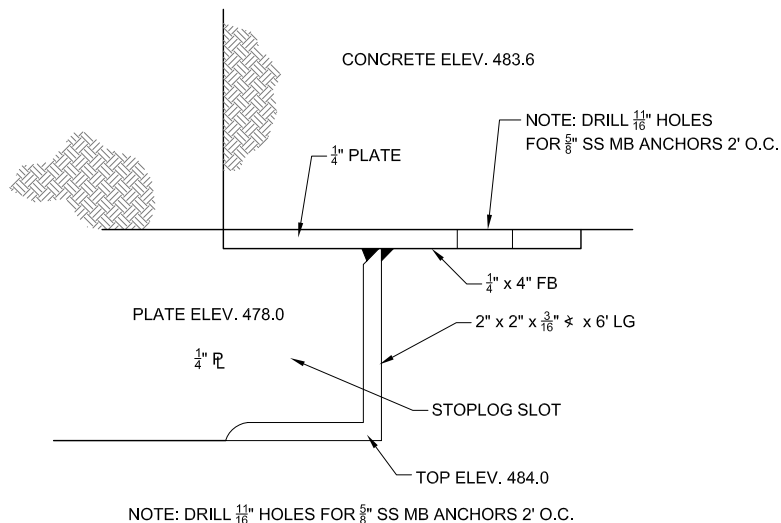
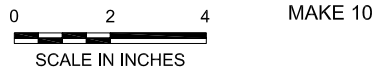


HANDRAIL BRACKET

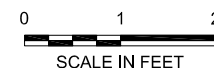
NOTE: MAKE FOURTEEN; FOUR WITH DOUBLE PIPE, TEN WITH SINGLE PIPE. WELD TO TRASHRACK AND/OR END OF WALKWAY SUPPORTS SO THAT PIPES ALIGN AT 6 FEET ON CENTER TO MATCH HANDRAIL (SEE SHEET 12).



W8 x 31 BEAM SECTION WITH END PLATE



FISHWAY AND DIVERSION STRUCTURE STOP LOG GUIDE DETAIL



REVISIONS				
REV	DATE	BY	APP'D	DESCRIPTION

DESIGNED BY: P. POWERS
DRAWN BY: LEVASSEUR
CHECKED BY:
APPROVED BY:
SCALE: AS NOTED
DATE: 06/14/06

FINAL DESIGN
HOFER DAM FISH PASSAGE PROJECT

DETAILS

SHEET:

15

SHEET NO. **15** OF **15**