

Walla Walla County Conservation District NEWSLETTER



325 North 13th Avenue
Walla Walla, WA 99362
PHONE: (509) 956-3777

Spring 2024
Volume 28, Issue 1

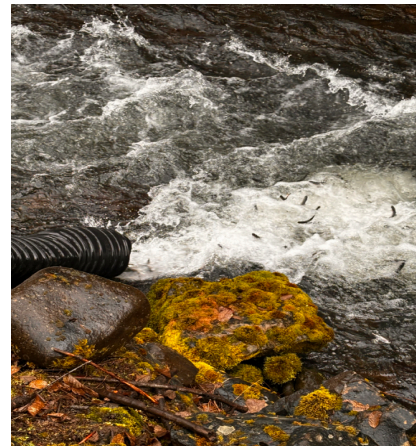
Unsubscribe? Contact information@wwccd.net

In This Issue

- Mill Creek Smolt Release
- District Project Update
- Outreach
- ESA Bulletin
- Dew Drop Drill
- VSP
- Conservation Conversations
- Board Meeting

Mill Creek Smolt Release

On March 26-27, 2024, the Confederated Tribes of the Umatilla Indian Reservation (CTUIR), Oregon Department of Fish and Wildlife (ODFW), and Washington Department of Fish and Wildlife (WDFW) released 117,000 Chinook salmon at the Watershed intake located on Mill Creek. The smolts, which were 18 months old and about 6 inches long, came from the CTUIR fish hatchery on the Walla Walla River. The release of 30,000 smolts was observed by the Walla Walla Water 2050 and local citizens. The CTUIR is releasing over 500,000 Chinook smolts in the basin this year, the goal is to have 5,000 salmon return to the basin annually. Last year, 18 Chinook salmon returned to the basin. This is the second year salmon have been released in large numbers, and it is expected that the first salmon will return in 2025. The first salmon are expected to return in 2025.



District Project Updates

Since December 2023 the district has hosted three tours that showcased the natural resources and challenges in our area. The district has partnered with Whitman College and Walla Walla Public Schools to help educate students about soil science, stream function, flooding, riparian conditions, and stewardship of the land. Additionally, the staff has been busy installing several fish screens along with flow meter projects.

For upcoming tasks in 2024, the District plans to construct two instream restoration projects. One on upper Mill Creek and the other on Coppei Creek. The staff will be coordinating with landowners and Natural Resource Conservation Services to construct a bridge on Coppei Creek. Dry Creek will have a bank stabilization project implemented as well as riparian plantings. We will be installing several riparian projects and performing fuel assessments for homeowners in partnership with the Department of Natural Resources Wildfire Ready Neighbors. The District will also continue to work with area irrigators on water efficiency projects.

Outreach programs and events



WWCCD has partnered up with Sharpstein Elementary School and their whole 5th-grade classes to create an outdoor education curriculum that incorporates Place-Based Education through ClimeTime. This program is focused on riparian restoration. Students are creating their own site plans for one of our awesome landowners. Students will plant 120 native plants along Yellowhawk and Caldwell Creek this year. The students field trips focused on macro-invertebrate to determine water quality. They have been soil scientist thanks to MySoil! The students will analyze soil data, complete their site plans, and plant the 120 plant species this coming spring 2024.

Place-based education takes students out of the classroom and into nature. Place-Based Education (PBE) immerses students in local heritage, cultures, landscapes, opportunities, and experiences, using these as a foundation for studying language arts, mathematics, social studies, science, and other subjects across the curriculum.

EPA Endangered Species Bulletin is Live!

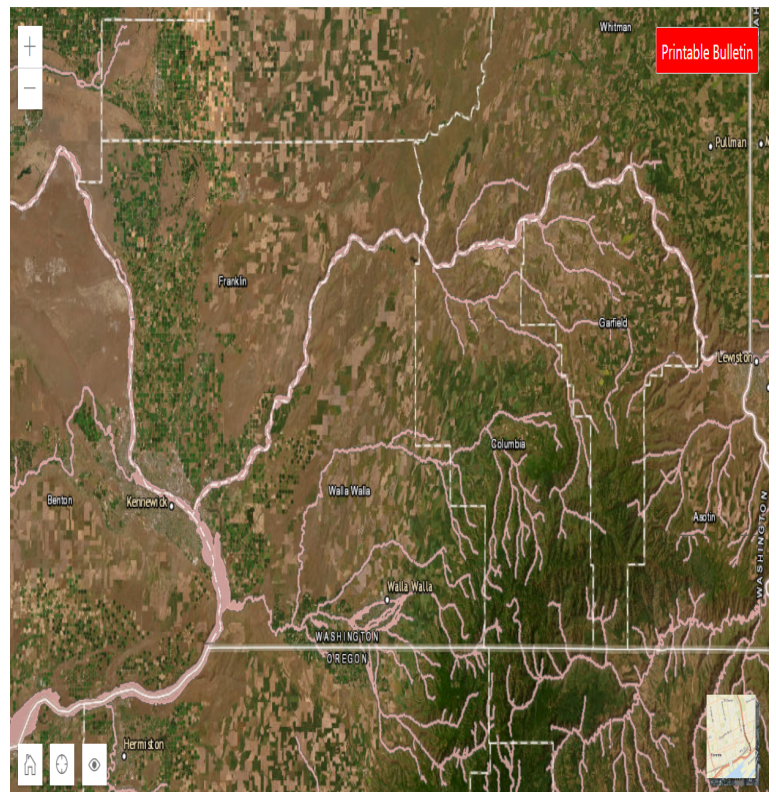
WHAT ARE BULLETINS?

Bulletins serve as a notification of geographically specific areas that require pesticide use limitations for the protection of threatened or endangered species and their designated critical habitat. Pesticide Use Limitation Area (PULA) may limit the application area, timing, or type of pesticide that can be used. Bulletins serve as an extension of the pesticide label therefore must be obtained before pesticide application.

Read the Pesticide Label

Suppose your pesticide contains requirements to obtain a Bulletin. In that case, information will be located in the Directions for Use section of the label and will specifically direct you to obtain a Bulletin. If your pesticide label does not direct you to obtain a Bulletin no further Bulletin action is required.

GET A BULLETIN <https://www.epa.gov/endangered-species/bulletins-live-two-view-bulletins>, 844-447-3813
ESPP@epa.gov. For a local contact: Contact Annie Byerley at annie.byerley@wwccd.net.



The Dew Drop No-Till Drill Rental

WWCCD purchased a 3-foot no-till drill with funding from the WSCC Sustainable Farms and Fields grant. The Dew Drop is a small but mighty implement that can be towed with an ATV, UTV, or 4-wheeler. No tractor is needed! The low center of gravity and large, aggressive tires allow for the drill to go places not accessible by larger drills.

The cost to rent the Dew Drop is \$100 for a 2-day rental. There is a \$100 holding fee that is returned to the renter upon the return of the Dew Drop in good operating condition. Contact Annie Byerley at annie.byerley@wwccd.net or 509-956-3764 for any questions or to reserve the Dew Drop for yourself!



Voluntary Stewardship Program (VSP)

WWCCD staff have been reaching out to landowners this spring to make sure the Voluntary Stewardship Program (VSP) goals are met. Irrigators are being contacted to ensure their fish screens and flow meters are working properly, with several qualifying for financial assistance to help replace equipment. Landowners have been contacted to further our efforts in improving Walla Walla County Wetland maps. Culvert assessments have been conducted around the county to make sure they are functioning properly for fish migrating upstream. We are excited to announce that our efforts on culvert assessments have led to a South East WA Fish Passage Barrier training for regional partners hosted by the Washington Department of Fish and Wildlife (WDFW) on April 23rd-24th 2024.



Conservation Conversations

The Conservation District will be hosting open public forums. These are informal opportunities for community members to speak with experts regarding soil health, livestock, invasive species, and water rights. These forums are free and open to the public.



**WALLA WALLA COUNTY
CONSERVATION DISTRICT**
ESTABLISHED 1941



CONSERVATION CONVERSATIONS


TOPIC:
TOXIC WEEDS FOR LIVESTOCK

SPEAKERS:
DEBBIE M. WILLIAMS - DIRECTOR
WSU EXTENSION WALLA WALLA COUNTY
VIC REEVE - RETIRED WW WEED BOARD
TYLER COX - TURF MANAGEMENT DEPARTMENT AT WWCC


The Conservation District is hosting an open public forum for landowners to discussing toxic weeds for livestock.



When: April 10th 2024
Where: Water and Environmental Center
Time: 5pm-7pm
RSVP with Alison Crowley at alison.crowley@wwccd.net or sign up on: getconnected.uwbluemt.org



**WALLA WALLA COUNTY
CONSERVATION DISTRICT**
ESTABLISHED 1941




CONSERVATION CONVERSATIONS

TOPIC:
WATER RIGHTS

SPEAKERS:
SARAH DYMECKI W/
WA WATER TRUST

The Conservation District is hosting an open public forum for landowners to discuss water rights within Walla Walla basin.



When: April 24th 2024
Where: Water and Environmental Center
Time: 5pm-7pm
RSVP with Alison Crowley at alison.crowley@wwccd.net or sign up on: getconnected.uwbluemt.org



Mill Creek above the diversion

WWCCD Board Meetings

The District holds monthly meetings that occur on the 2nd Monday of each month. These meetings provide a round table of district updates and in-depth discussions on current projects. These meetings are open to the public, if you are an interested community member or have topics to be discussed contact the District Manager, Renee Hadley at renee.hadley@wwccd.net or (509) 956 3756

Walla Walla County Conservation District

District Staff

Renee Hadley, District Manager
Jenny Freer, Bookkeeper
Jeff Klundt, Burn Permit Coordinator
Joanna Cowles Cleveland, CREP Scientist
Annie Byerley, Conservation Scientist
Eila Chin, Conservation Technician
Grant Traynor, VSP Program Coordinator
Alison Crowley, Education and Outreach Coordinator
Cat Garza, Conservation Scientist

Board of Supervisors

Jesse McCaw
Alyson Buckley
Jim Kent
Jeff Schulke
Don Schwerin

Our USDA SERVICE CENTER partners

NRCS Staff

Tracy Hanger, District Conservationist Snake River Team
Bryce Krueger, WW area Resource Conservationist
Katy Martin, Snake River Team Program Support

FSA Staff

Kelley Betts, County Executive Director for WW & Columbia
Norma Colunga, Program Technician
Stephanie Kaping, Program Technician
Brooke Barich, Program Technician

www.wwccd.net

Non-Profit
U.S. Postage
Paid
99324
Permit #44

**Walla Walla County
Conservation District
325 North 13th Avenue
Walla Walla, WA 99362**